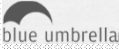


**ARTIFICIAL INTELLIGENCE AND THE CHANGING
LANDSCAPE OF THIRD PARTY COMPLIANCE**





Allan Matheson, CEO
Blue Umbrella

INTRODUCTION

"The development of full artificial intelligence could spell the end of the human race."

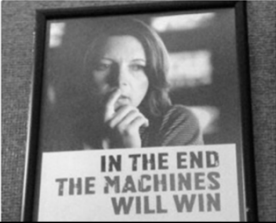
- Stephen Hawking to the BBC, December 2014



Elon Musk 
elonmusk

Follow

If you're not concerned about AI safety, you should be. Vastly more risk than North Korea.



INTRODUCTION

Bob: i can i i everything else.....

Alice: balls have zero to me to me to me to me to me to me to me to

Bob: you i everything else.....

Alice: balls have a ball to me to me to me to me to me to me to

Bob: i i can i i i everything else.....

Alice: balls have a ball to me to me to me to me to me to me to

Bob: i.....

**How We Analyzed the COMPAS
Recidivism Algorithm**

• ProPublica May 2016

INTRODUCTION



Kalishnikov



People's Daily, China
@PDCChina

1st robot injuring man case in China: robot went rogue at tech fair in S China Thu, smashing glass & injuring a man
<http://tiny.cc/2g3KzR>
12:17 PM - Nov 18, 2018
114 141 people are talking about this

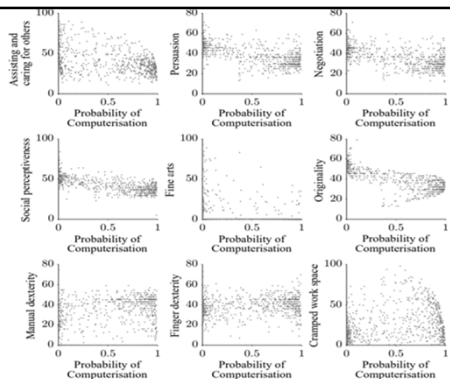
JOBS AT RISK

INDY/TECH

**STEPHEN HAWKING WARNS
ARTIFICIAL INTELLIGENCE 'MAY
REPLACE HUMANS ALTOGETHER'**

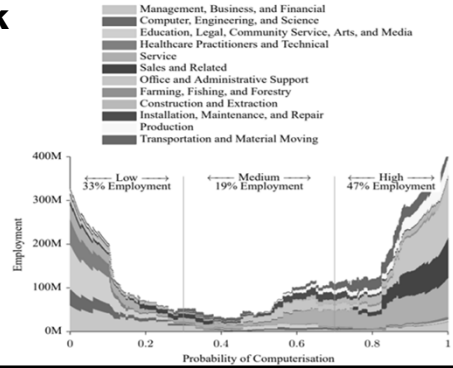
JOBS AT RISK

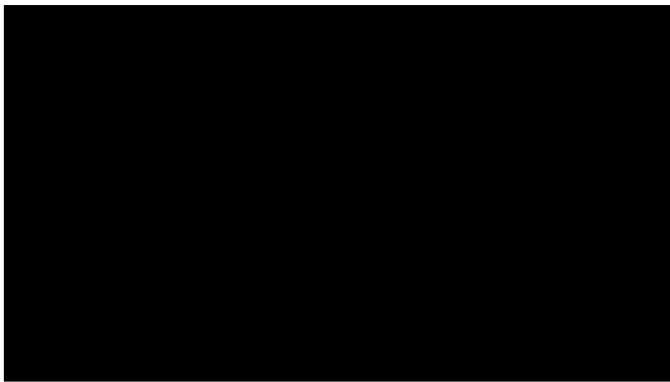
Frey, Osborne, 2017



JOBS AT RISK

Frey, Osborne, 2017





COMPONENTS OF AI

- Knowledge representation & Inference
- Natural language processing
- Automated planning and scheduling
- Machine learning
- Perception
- Robotics
- Computational creativity
- General intelligence

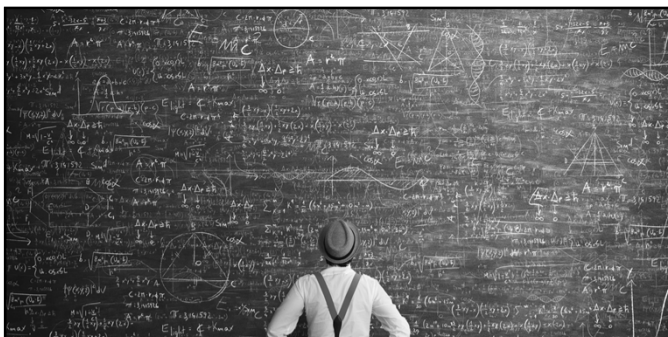




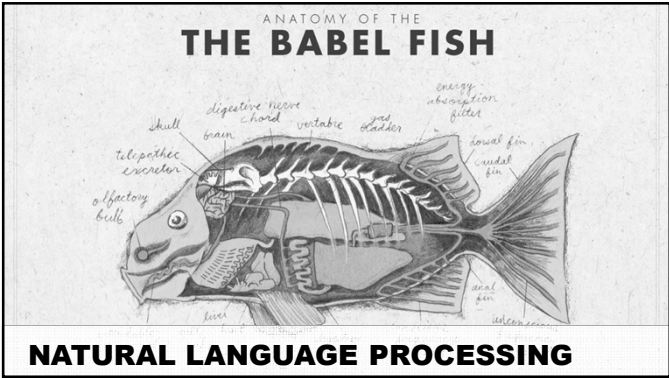
PERCEPTION, ROBOTICS, COMPUTATIONAL CREATIVITY



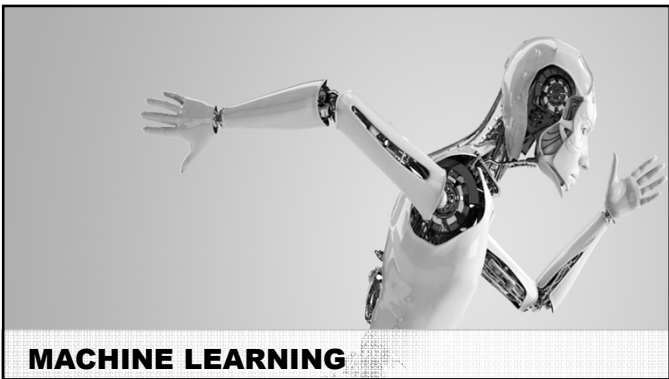
FOUNDATIONS FOR SUCCESS



KNOWLEDGE REPRESENTATION & INFERENCE

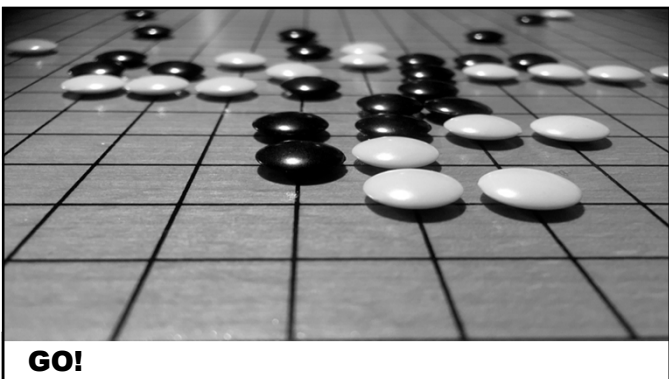




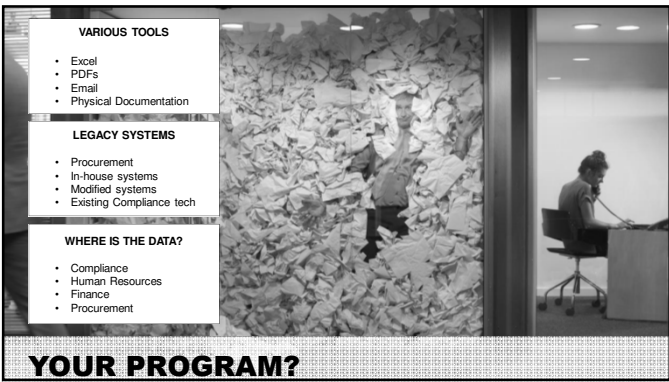


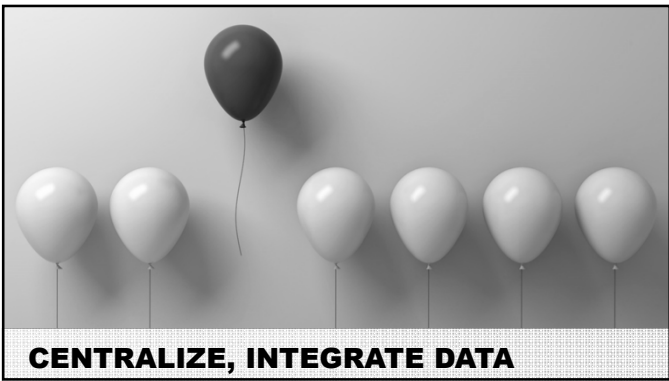


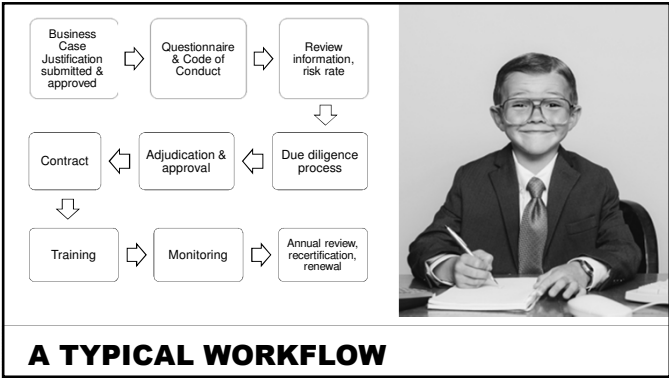


















LANGUAGE CAPABILITIES



MACHINE LEARNING AT WORK



THE FUTURE OF AI AND COMPLIANCE



QUESTIONS?



Allan Matheson
CEO, Blue Umbrella
allan@bluedd.com
www.bluedd.com