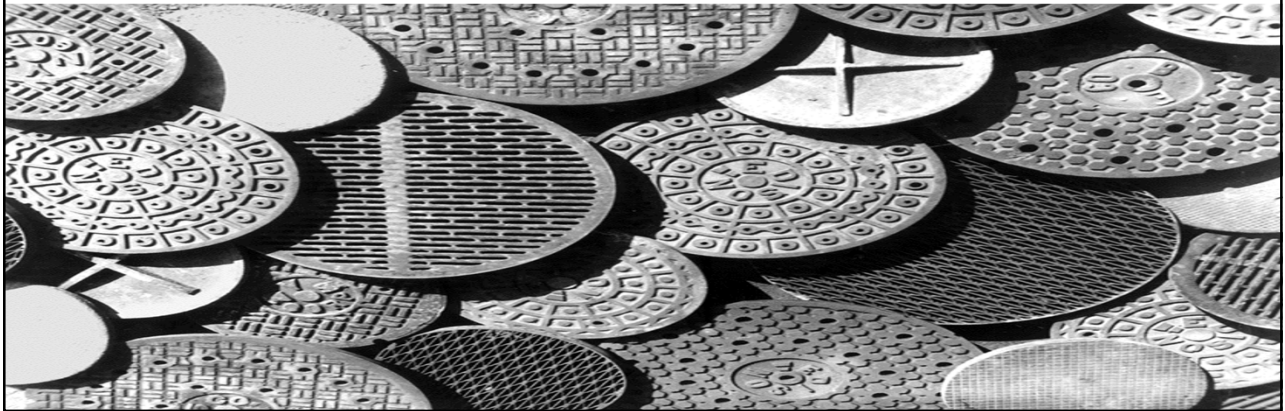




conEdison

EVERYTHING
MATTERS

Turn of a Century

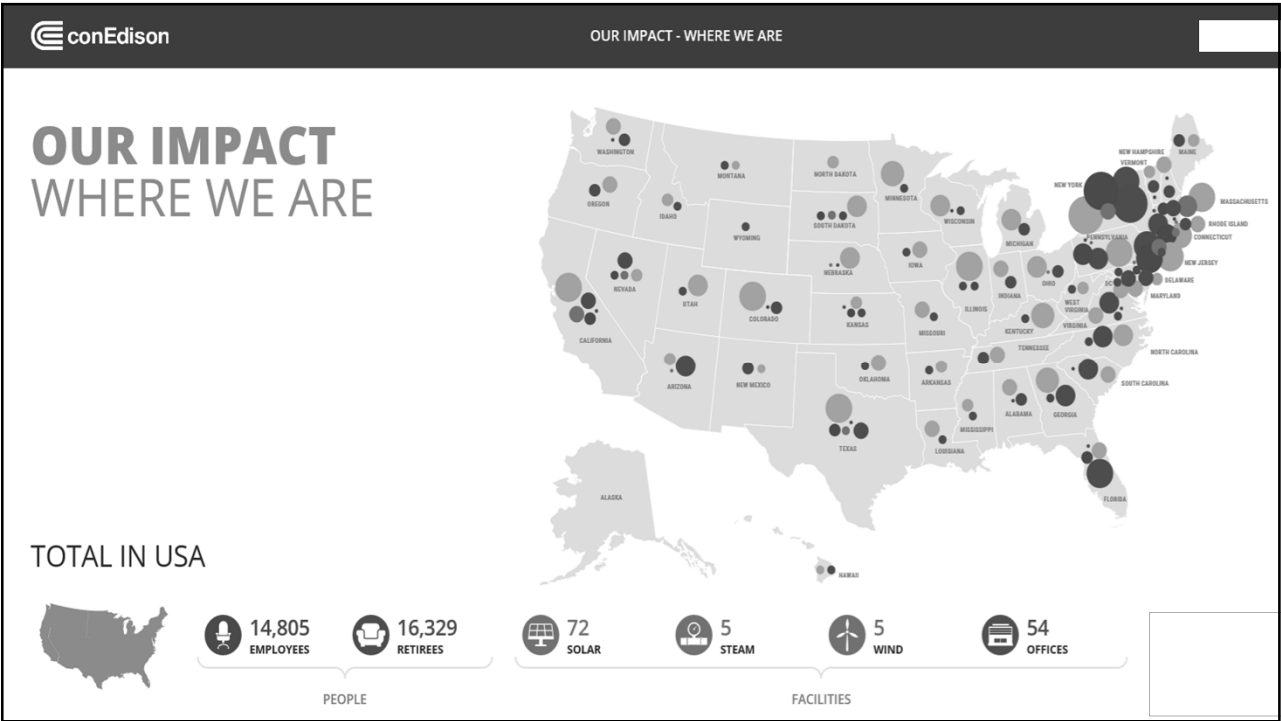


Something New in an Established Environment

Change Management

People, Process, Technology





NEW YORK



12,451
EMPLOYEES

10,248
RETIREES

10
SOLAR

5
STEAM

WIND

42
OFFICES

PEOPLE

FACILITIES

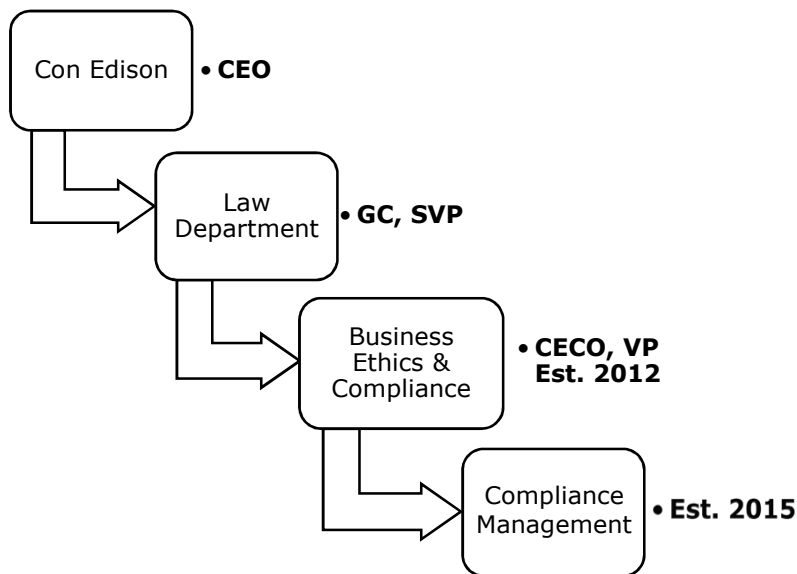
SOLAR PLANTS

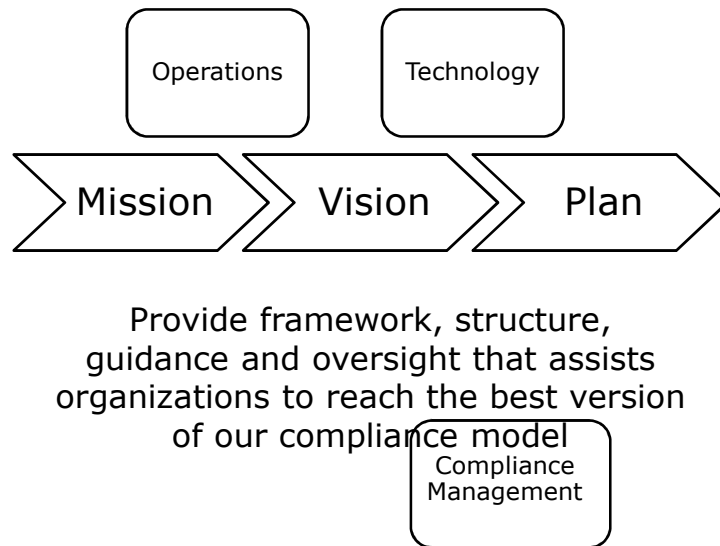
STEAM PLANTS

OFFICES

Facilities in Kings, Queens, Bronx, Richmond, Westchester, Rockland, and Orange counties map only.

CECONY
Orange & Rockland





How does a company implement a corporate compliance program while the industry undergoes unprecedented change?

Where does one start?



History of who we were



Pride of who we are



Opportunity to be better



**Priorities critical
to the Company's
Achieving
operational
compliance
Safety is our
goal
Operational
Excellence**

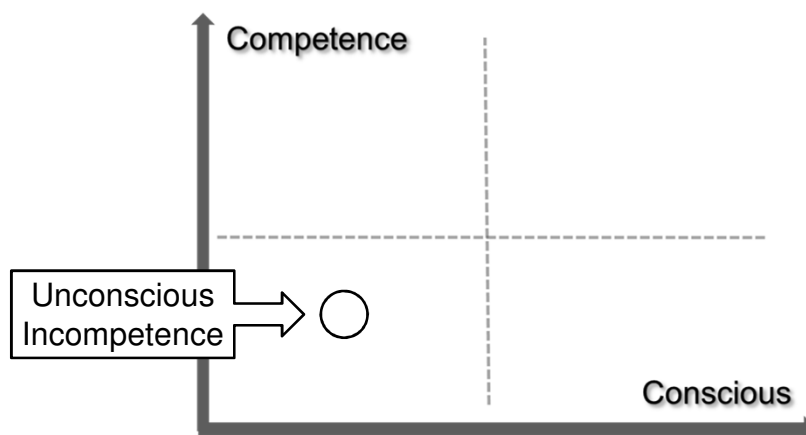
**Customer
Experience**

**Opportunity
to be better**

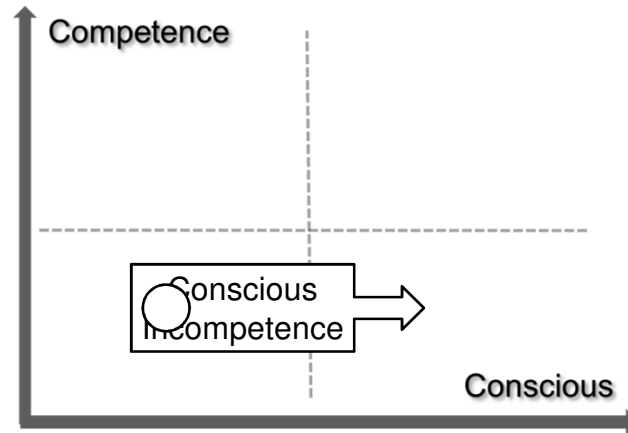


**Operational Compliance
is part of Operational
Excellence**

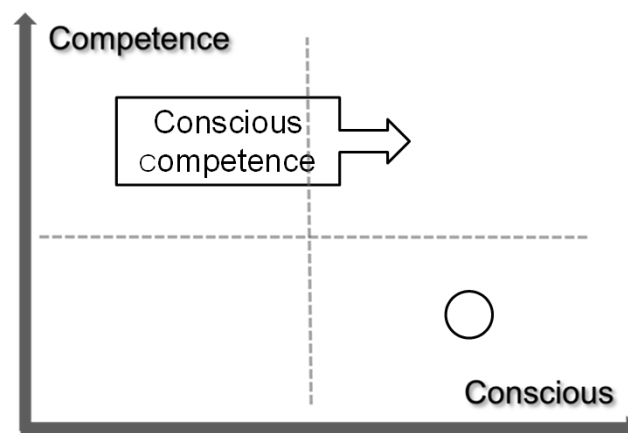
The Learning Matrix



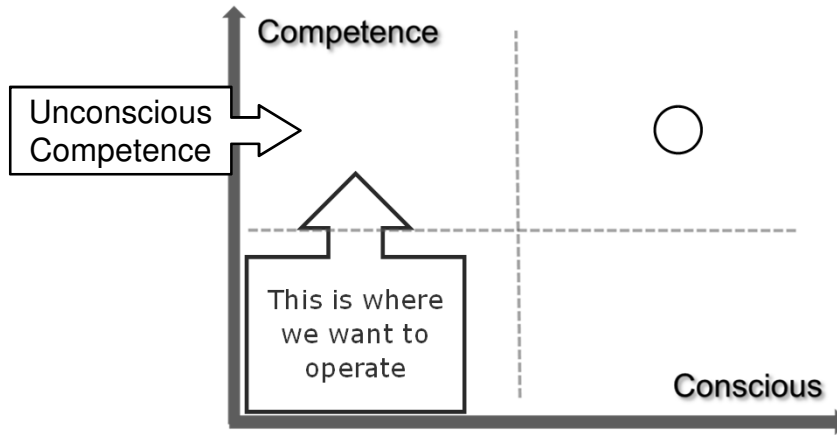
Find the Blind Spots and Gaps



Manage risk and process efficiencies



Environment is set, compliance is a habit



Compliance assessed using a maturity model

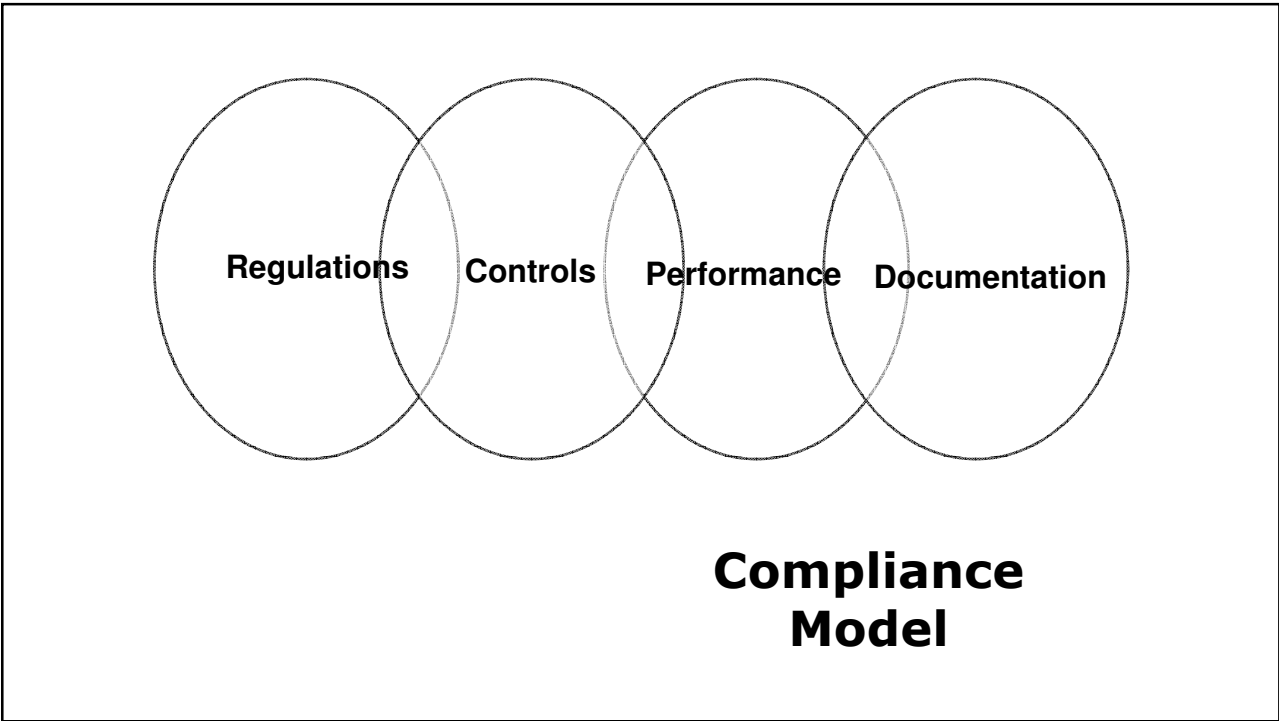
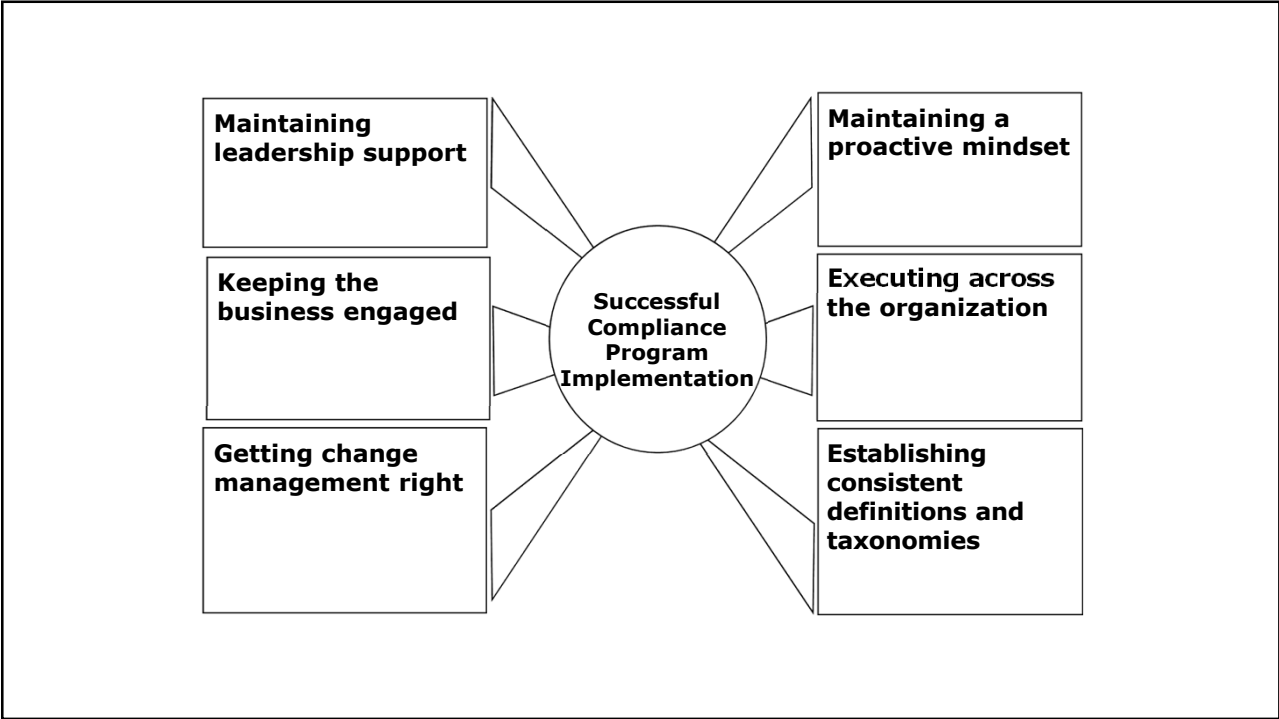
Compliance Infrastructure Category	Maturity Index				
	Basic	Evolving	Established	Advanced	Leading Pra
Regulatory compliance and integrity foundation					
Regulatory compliance governance and oversight					
Regulations					
Company Controls					
Performance and Compliance					

Forum surfaced concerns and confidences



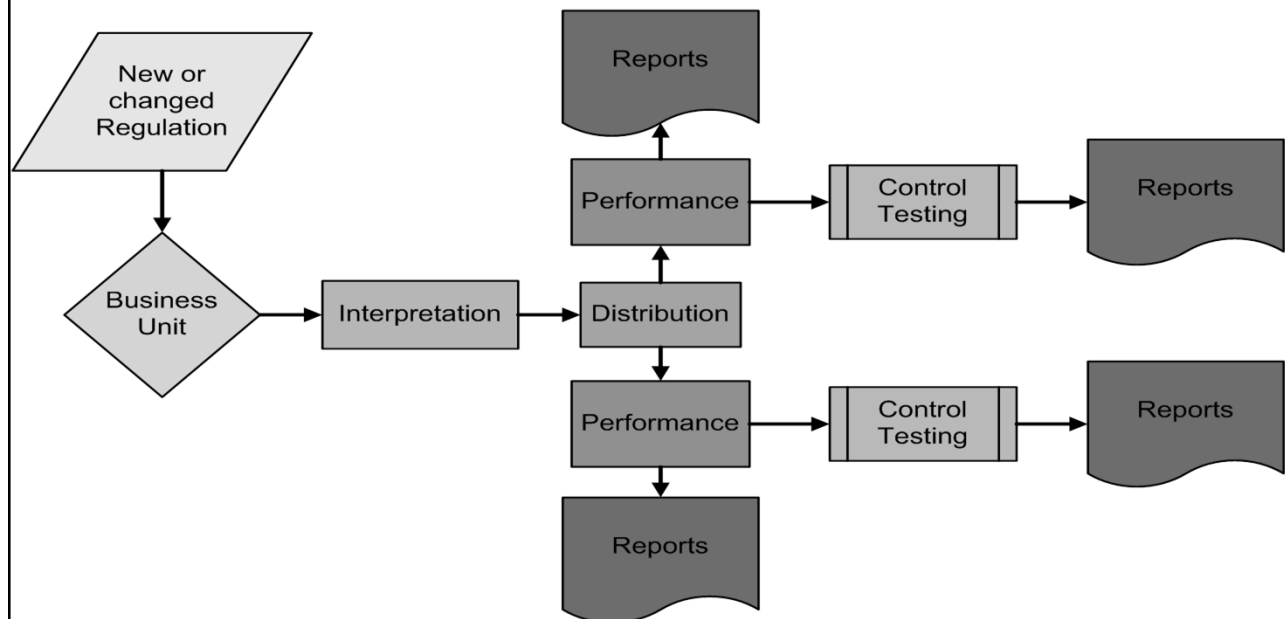
Compliance Leaders selected in business units






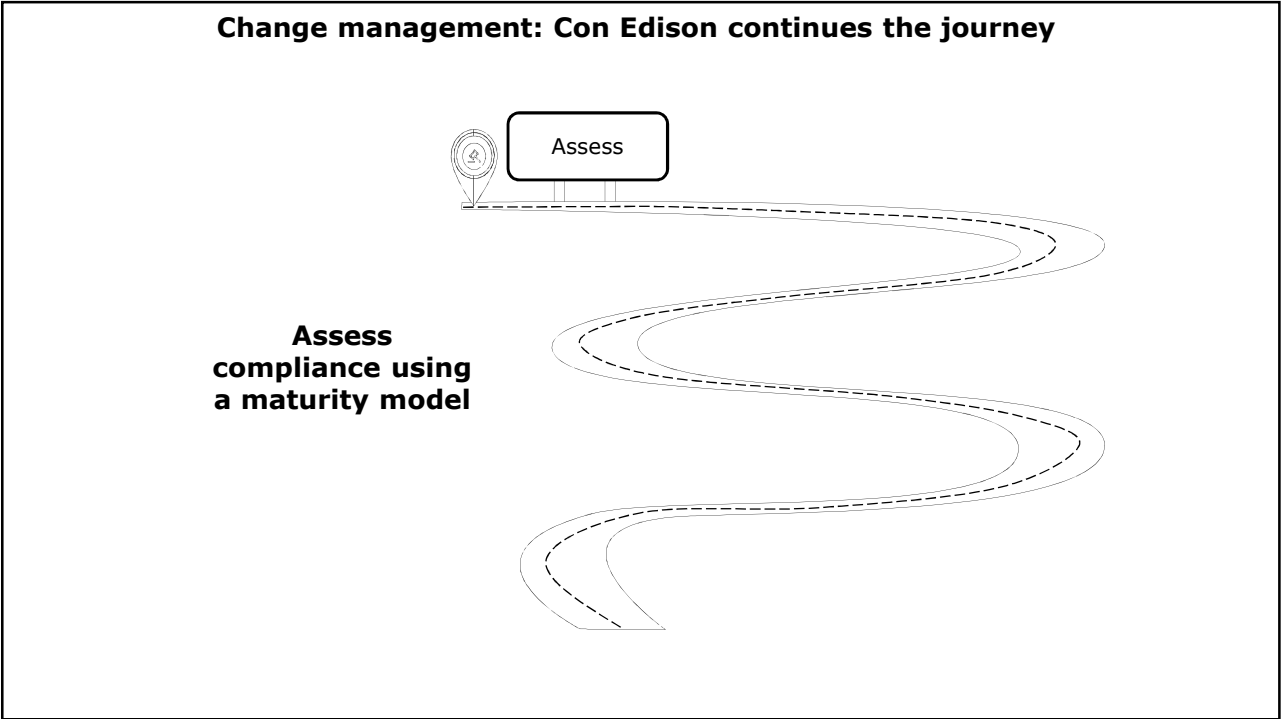
Technology is the key to Compliance process transformation or standardization
Increases the transparency of Compliance Status

Compliance Tracking System (CTS)



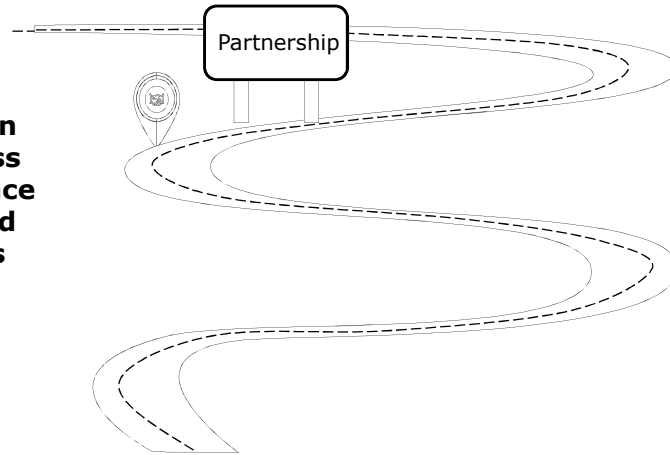
23





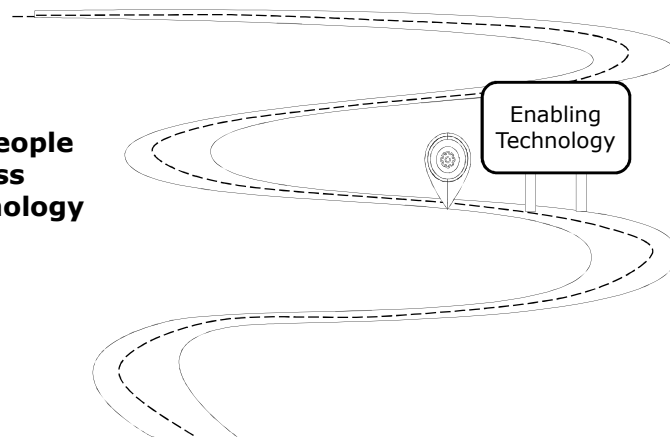
Change management: Con Edison continues the journey

**Collaboration
with Business
Units to surface
concerns and
confidences**



Change management: Con Edison continues the journey

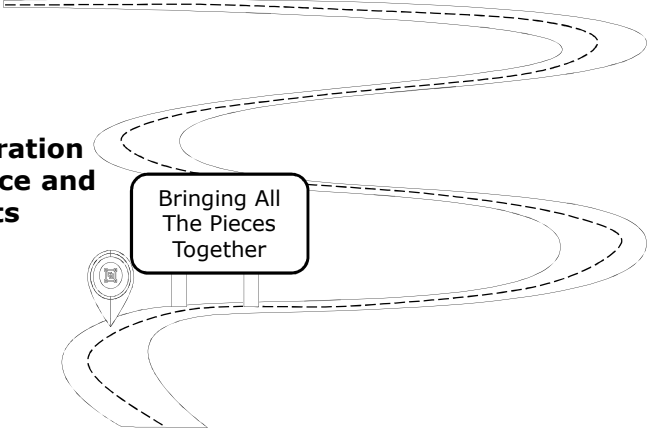
**Connecting People
and Process
through Technology**



Change management: Con Edison continues the journey

**Trust and collaboration
between compliance and
Business Units**

Bringing All
The Pieces
Together



Change management: Con Edison continues the journey

**Prepared to adapt to
the next challenge
on our journey**

Assess

Partnership

Enabling
Technology

Bringing All
The Pieces
Together

